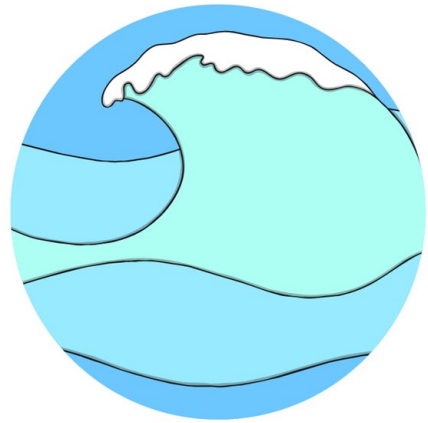
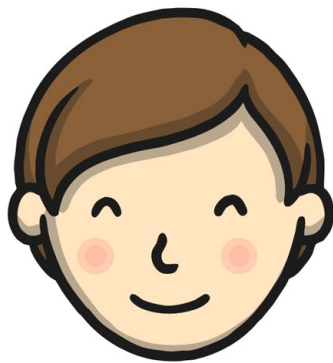
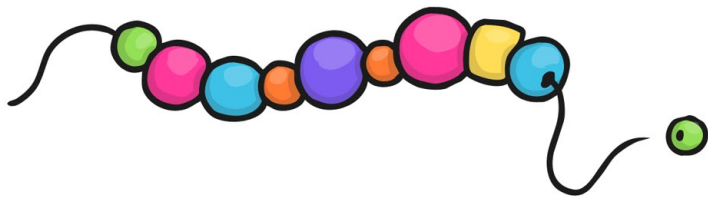


# My ea Workbook



ea



This book belongs to \_\_\_\_\_

Circle all the ea sounds.

ie

ea

ou

oy

au

oy

ea

ou

ea

ie

ea

Colour all the ea sounds.

ie

ou

ea

oy

au

oy

ea

ey

ea

ow

ea

Circle all the pictures that have the ea sound.



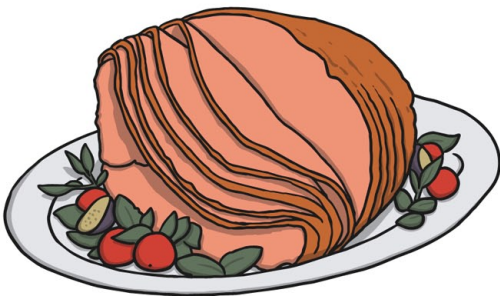
seat



yawn



royal



meat



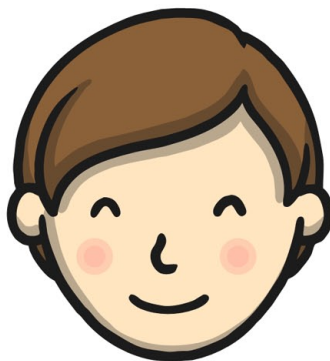
glue



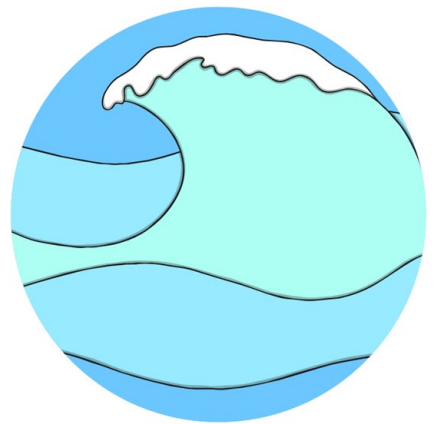
bead



wheel

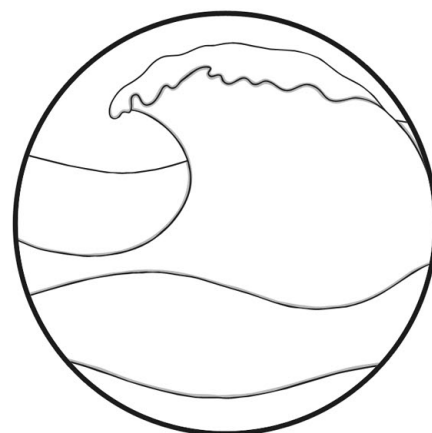
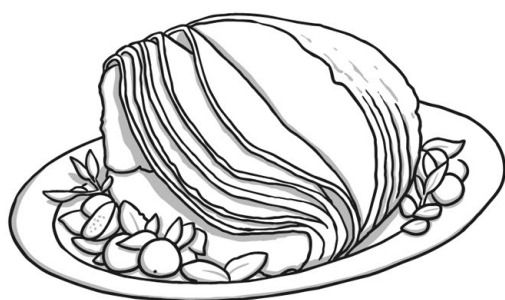
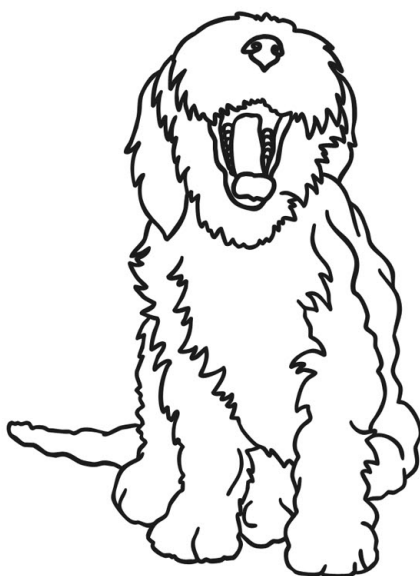


head



sea

Colour all the pictures that have the ea sounds.



Draw a picture that has the ea sound.

A large, empty rectangular box with a thin purple border, intended for a child to draw a picture that contains the 'ea' sound.

What did you draw?

A large, empty rectangular box with a thin purple border, intended for a child to write a description of their drawing.

Trace the sound.

ea ea ea ea

Write the sound.

Finish the word.



s

---



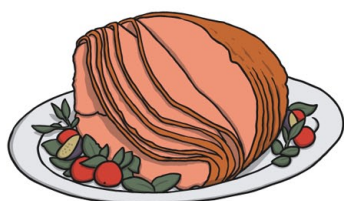
s

---



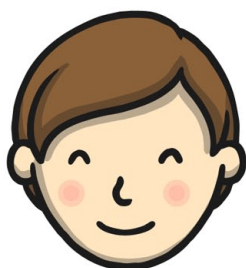
b

---



m

---



h

---